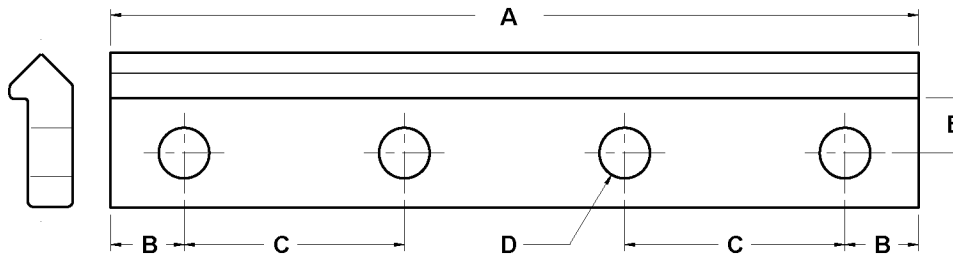


MODERN LINEAR

STANDARD DRILLED TRACK HOLE SPACING AND SIZE



HARDENED TRACK SECTIONS

PART #	# OF HOLES	A = 0.015	B = 0.005	C = 0.005	D = 0.005	E = 0.005
T-1-1250-7	7	12.50	0.25	2.000	0.156	0.156
T-1-2450-13	13	24.50				
T-1-3650-19	19	36.50				
T-1-4850-25	25	48.50				
T-1-6050-31	31	60.50				
T-1-7250-37	37	72.50				
T-2-1263-5	5	12.63	0.31	3.000	0.203	0.219
T-2-2463-9	9	24.63				
T-2-3663-13	13	36.63				
T-2-4863-17	17	48.63				
T-2-6063-21	21	60.63				
T-2-7263-25	25	72.63				
T-3-1275-5	5	12.75	0.38	3.000	0.281	0.313
T-3-2475-9	9	24.75				
T-3-3675-13	13	36.75				
T-3-4875-17	17	48.75				
T-3-6075-21	21	60.75				
T-3-7275-25	25	72.75				
T-4-1300-4	4	13.00	0.50	4.000	0.344	0.375
T-4-2500-7	7	25.00				
T-4-3700-10	10	37.00				
T-4-4900-13	13	49.00				
T-4-6100-16	16	61.00				
T-4-7300-19	19	73.00				

ALL DIMENSIONS ARE IN INCHES.

NOTE:

Standard drilled track also available unhardened in stainless steel.

Use Prefix:

TS = Unhardened Steel

T SS = Hardened Steel

TS SS = Unhardened SS