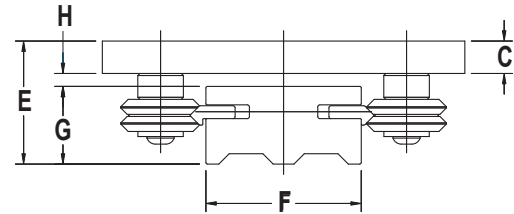


- 4 Roller Carriage offers good load capacity in all directions.
- Standard and custom lengths.
- Low Profile
- Patent Pending compliant rail feature.



* End spacing dimension is equal at both ends based on customer specified length.

DIMENSIONS (in)

SIZE	A	B	C	D	E	F	G	H	I	K	L	M	CARRIAGE	RAIL
VQ-1	3.500	3.500	0.313	2.375	1.188	1.500	0.750	0.125	4.000	#6-32 UNC	5/32 (0.156)	.50 X .15 DP	VQC-1	VQR-1
VQ-2	4.750	4.750	0.375	3.375	1.520	2.000	1.000	0.125	6.000	1/4-20 UNC	9/32 (0.281)	.75 X .25 DP	VQC-2	VQR-2
VQ-3	6.500	6.500	0.375	4.500	1.755	2.500	1.250	0.130	8.000	5/16-18 UNC	11/32 (0.344)	.75 X .33 DP	VQC-3	VQR-3

SPECIFICATIONS & OPTIONS

- Guide is also available with adjustable carriage.
- Adjustable carriage has two eccentric bushings.
- Rigid rail recommended for use with adjustable carriage and/or when rails need to be joined end to end.
VQC - X ___ - A Adjustable
VQR - X ___ - R Rigid Rail
- Rails and carriages are sold separately.
- All dimensions are industry standard ($\pm .005$ inches), unless otherwise specified.

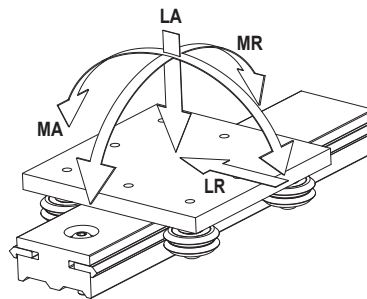
MATERIALS

Carriage Plate	6061-T6 Aluminum Clear Anodized
Track Spacer	6061-T6 Aluminum Clear Anodized
Fasteners	18-8 Stainless Steel
Double Track	See Double Track
Bushings	See Guide Roller Bushings
Rollers	See Guide Rollers

NOMENCLATURE

CARRIAGE **VQC - 2 - SSX - A**
 Vector Quad Carriage | Size | Adjustable
 | | | Stainless Steel Rollers
 | | | (VW2 - SSX)

RAIL **VQR - 2 - R - SS - 3800 - 7**
 Vector Quad Rail | Size | Rigid | Stainless Steel Track
 | | | | Length 38" | # Hole: 7



LOAD CAPACITY

	LBS.		IN - LBS.	
SIZE	LA	LR	MA	MR
VQ-1	228	268	175	175
VQ-2	560	644	680	680
VQ-3	1528	1382	2349	2349

Working load capacities reflect lubricated wheel/track interface.