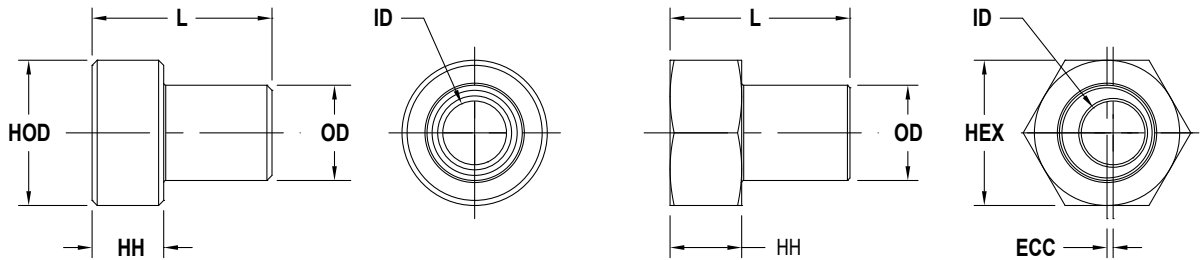
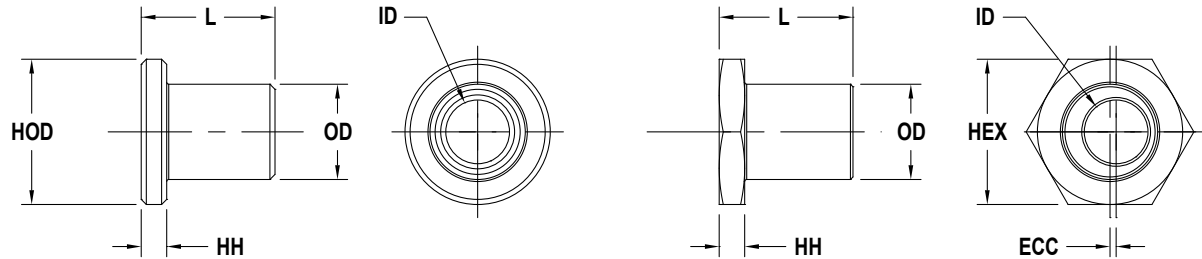


STANDARD



LOW HEAD



STANDARD DIMENSIONS (in.)

CON	ECC	ROLLER	L	OD	HEX	ID	EC	ECC	HH	HOD
B-1	BX-1	VW-1	0.550	0.1873	7/16	0.140	#6	0.012	0.250	0.440
B-2	BX-2	VW-2	0.706	0.3748	9/16	0.250	1/4	0.024	0.281	0.560
B-3	BX-3	VW-3	0.990	0.4722	3/4	0.312	5/16	0.042	0.375	0.750
B-4	BX-4	VW-4	1.177	0.5904	7/8	0.375	3/8	0.060	0.437	0.880
B-4XL	BX-4XL	VW-4XL	1.555	0.8650	1-1/4	0.563	9/16	0.060	0.565	1.250

LOW HEAD DIMENSIONS (in.)

CON	ECC	ROLLER	L	OD	HEX	ID	EC	ECC	HH	HOD
B-1 LH	BX-1 LH	VW-1	0.380	0.1873	7/16	0.140	#6	0.012	0.080	0.440
B-2 LH	BX-2 LH	VW-2	0.525	0.3748	9/16	0.250	1/4	0.024	0.100	0.560
B-3 LH	BX-3 LH	VW-3	0.740	0.4722	3/4	0.312	5/16	0.042	0.125	0.750
B-4 LH	BX-4 LH	VW-4	0.865	0.5904	7/8	0.375	3/8	0.060	0.125	0.880
B-4XL LH	BX-4XL LH	VW-4XL	1.178	0.8650	1-1/4	0.563	9/16	0.060	0.188	1.250

SPECIFICATIONS & OPTIONS

- BX = Eccentric Bushing.
- Eccentric mounting hole.
- By rotating the BX bushing on its fastener, the clearance between the wheel and track can be adjusted.
- Eccentric bushing has knurled face to hold position.
- B = Stationary Bushing.
- Concentric mounting hole.
- The major load should be carried on the stationary bushing.
- SS Signifies Stainless Steel.
- All dimensions are industry standard ($\pm .005$ inches), unless otherwise specified.

MATERIALS

- Carbon steel with electroless nickel plating.
- 303 SS

NOMENCLATURE

BUSHINGS

